



# HILL VIEW

Project By  
**CEPL GROUP**





"Hill View" Villas is an endeavour to not only create luxurious, contemporary homes but more importantly, to make possible peaceful abodes. With selectively designed villas spread over an acre, our aim is to bring you closer home to a life of peace and happiness. Surrounded By the mountains & valley, "Hill View" is your destination where serenity beckons and lets you live the life you have always wanted.

"Hill View" is all about wellness, and we all know the one ingredient that boosts mood & health; Water. Here, you get the relaxing environment, the captivating beauty of its nature. Making it the perfect blend of beauty, quietness, and spirituality. The missing splash that makes "Hill View" so Zen..

The sheer amount of greenery around your home makes you experience the refreshing nature in every way possible; whether the fresh smell of grass, the pure air around you, or the ample open space for your family to enjoy.





## More than just square meter's...

In the middle of the nature, the perfect family home is built. Villa's are designed down to the smallest detail to be your haven. Being in a home that overlooks a shimmering private lake, makes you feel that you've reached the pinnacle of brilliant architecture & exclusive living. But more importantly, it's a home that provides a unique kind of warmth to every loved one, friend, or family member in it. All the while, maintaining the perfect atmosphere, privacy, and views.

Exuding opulence and elegance, radiating style and uncompromising standards, the development is crafted using only the best-quality materials, state-of-the-art fittings and refined finishing touches. Exterior of the villa is a calm and serene area of outstanding natural beauty, overlooking the green carpeted fields, offering complete privacy from the outside world. The interiors are designed in such a way to adapt to the needs of the owner and boasts of open and flowing spaces and are tuned for a perfect retreat with a customized approach in internal planning. With so much spaciousness and greenery around you, you will never feel trapped even in the crowded city.

---

14	3.65	16030 sQ.FT.
VILLAS	ACRES	CHILDREN PLAY AREA





## More than just a villa...

Spread over G+1  
With a total built up area of 5000 sq.ft. (approx.)  
Spacious 5 bedrooms  
Multiple car parks Study room  
and pool  
Lush landscaped front and rear lawns 24 x 7  
power backup  
Advanced security systems





## Wind Down Swimming Pool

Cool off with a relaxed dip or splash around with the entire family, the oversized pool is the ideal place to relax and re-charge after a hectic day at work. The facility conforms to the safety standards and the cozy environment encourages you to pamper your soul.

## Added Luxuries

- Club House
- Private Swimming Pool For Each Bungalow
- Badminton Court In open Space
- Senior Citizen Sitting Area
- Kids Play Area
- Park
- Paved Park With Sitting Area
- Cc Tv Surveillance Cameras
- Round The Clock Security
- Rain Water Harvesting
- Underground Cabling





## Take your life to an all new high

### VILLA

Spacious Signature Villas with Private Garden • German-finished Private Swimming Pool • 4 Bedrooms and 1 Media Room with Attached Bathrooms, Powder Room, Lounge Area with Deck and Pool, Kitchen, Servants Room and Parking Space • Open Floor Plan Makes the Living Dining-Swimming Pool and Deck Areas Feel Like an Expansive Lounge for Entertainment

### VILLA INTERIORS

Tiles - 6 X 3, 5 X 2.5 & 2 X 4 • Fitting - WC & Wash basin with Jaguar fittings • Windows - Powder Coated • Doors - Laminated flesh door •

### sECURITY

Private-gated Community of 21 Vitas • 24-Hours Security

### LANDsCAPING

Open Landscaped Aris, Childrens Play Area, Landscaped Gardens, Gazebos, Benches, Barbeque Pits • Beautiful Red Roads • Internationally Designed Azure Water Bodies • Tres Lined Avenues • Water Harvesting.

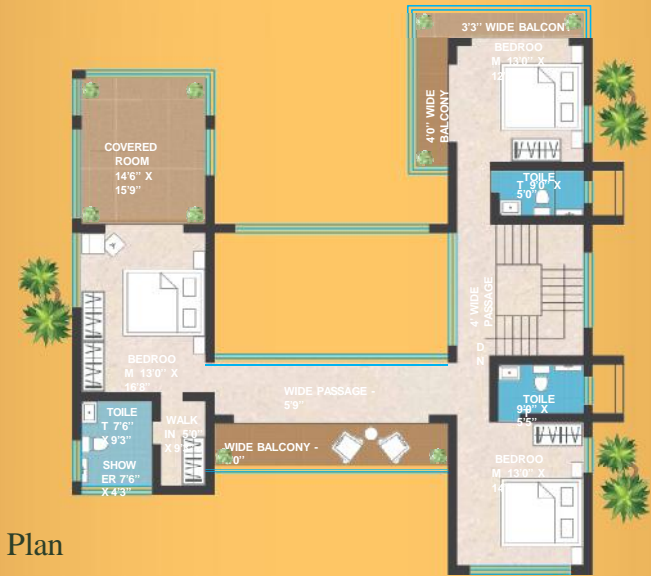


# Aesthetically Crafted Designs



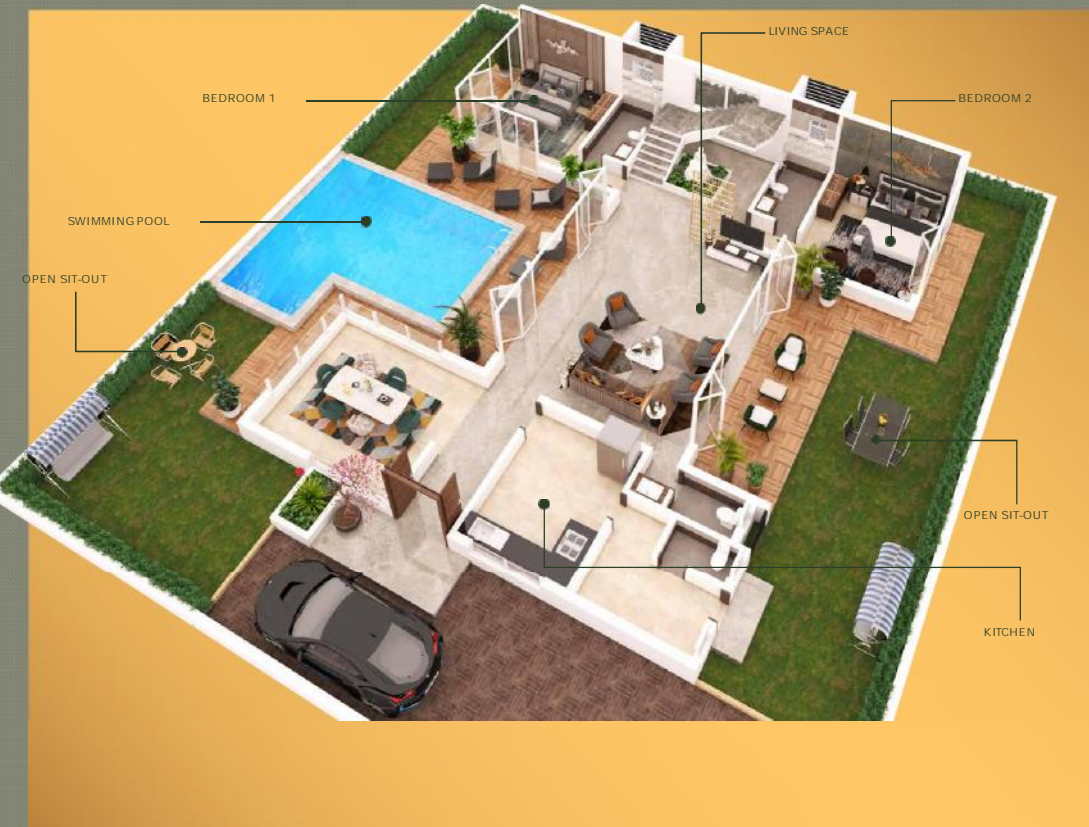
Ground Floor Plan

# & Delivered To You



First Floor Plan







# Location



Project By  
**CEPL**  
+91 98206 40331

Site Address : Plot 78, Gold Valley, Near Radisson Hotels, Tungarli, Lonavala - 410 401 Email ID:  
engg.condesign@yahoo.in

**For Further Details, Call - +91 9730848883**

Note: The contents of this brochure are purely conceptual and have no legal binding on us. This developers reserve the rights to amend the layout plans, numbers of floor plans, elevation, colour scheme, specifications and amenities etc.

